

Figure 32. Colour amplitude display of post-stack migrated data for crosslines X12 and X30.

Note: From Res2 stack, processes FXY, FK and 3-D phase-shift migration has been applied after stack.



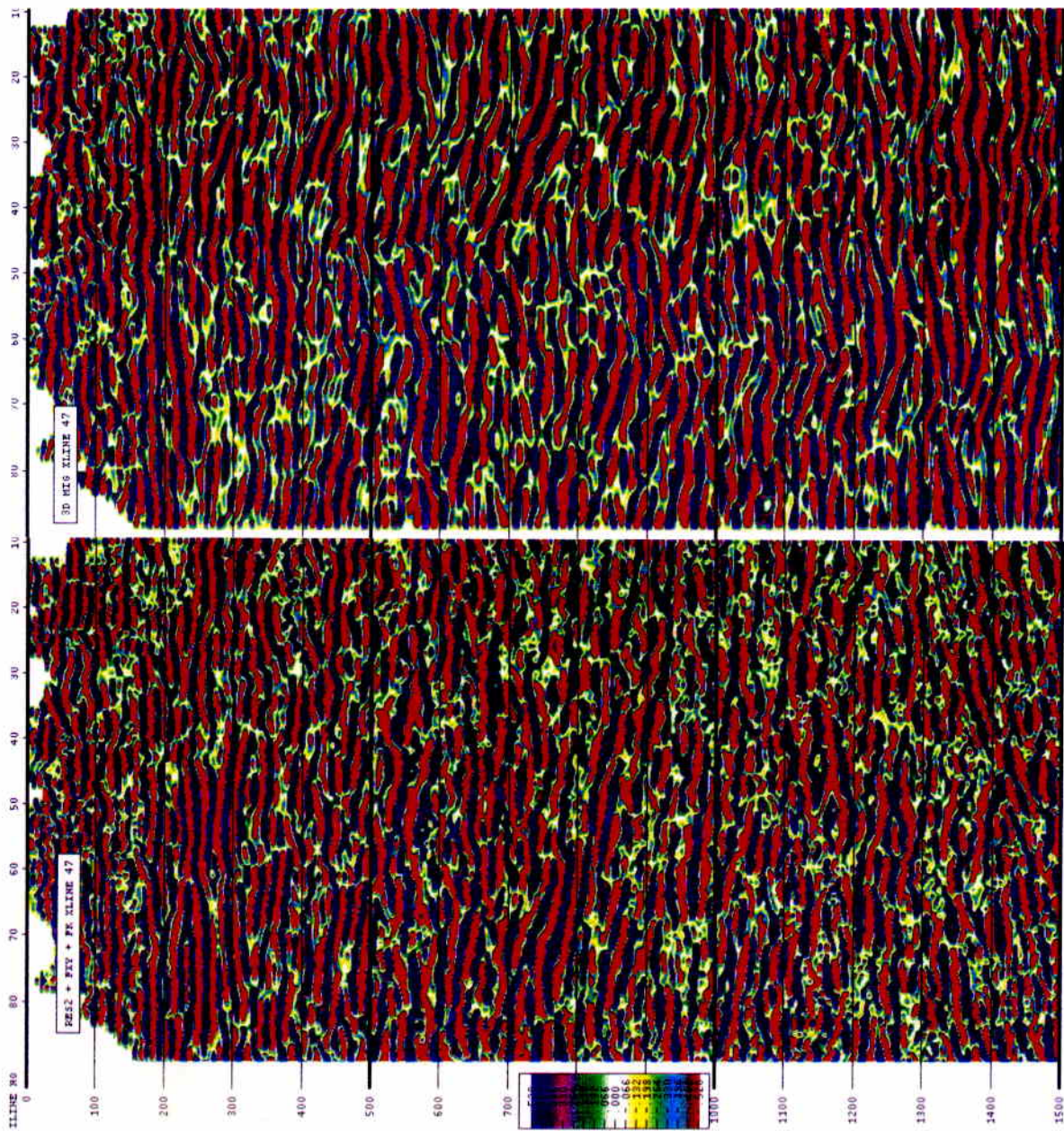


Figure 33. Colour amplitude display of stacked and migrated data for crossline X47.

Note: From Res2 stack, processes FXY and FK have been applied. In addition 3-D phase-shift migration has been applied to the right-hand panel only.



Fig 34. Stacked and migrated time slices at 150 ms.

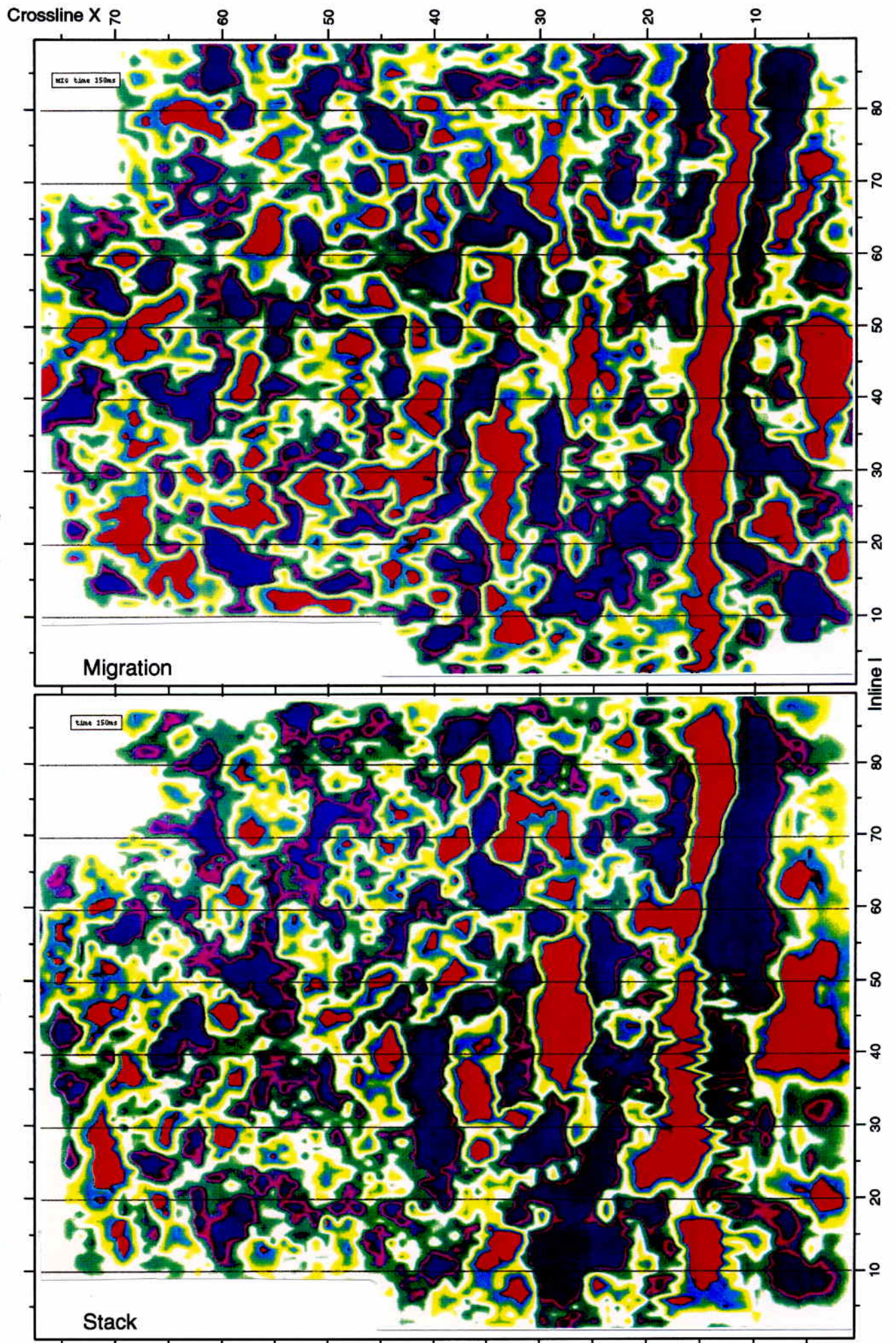




Fig 35. Stacked and migrated time slices at 160 ms.

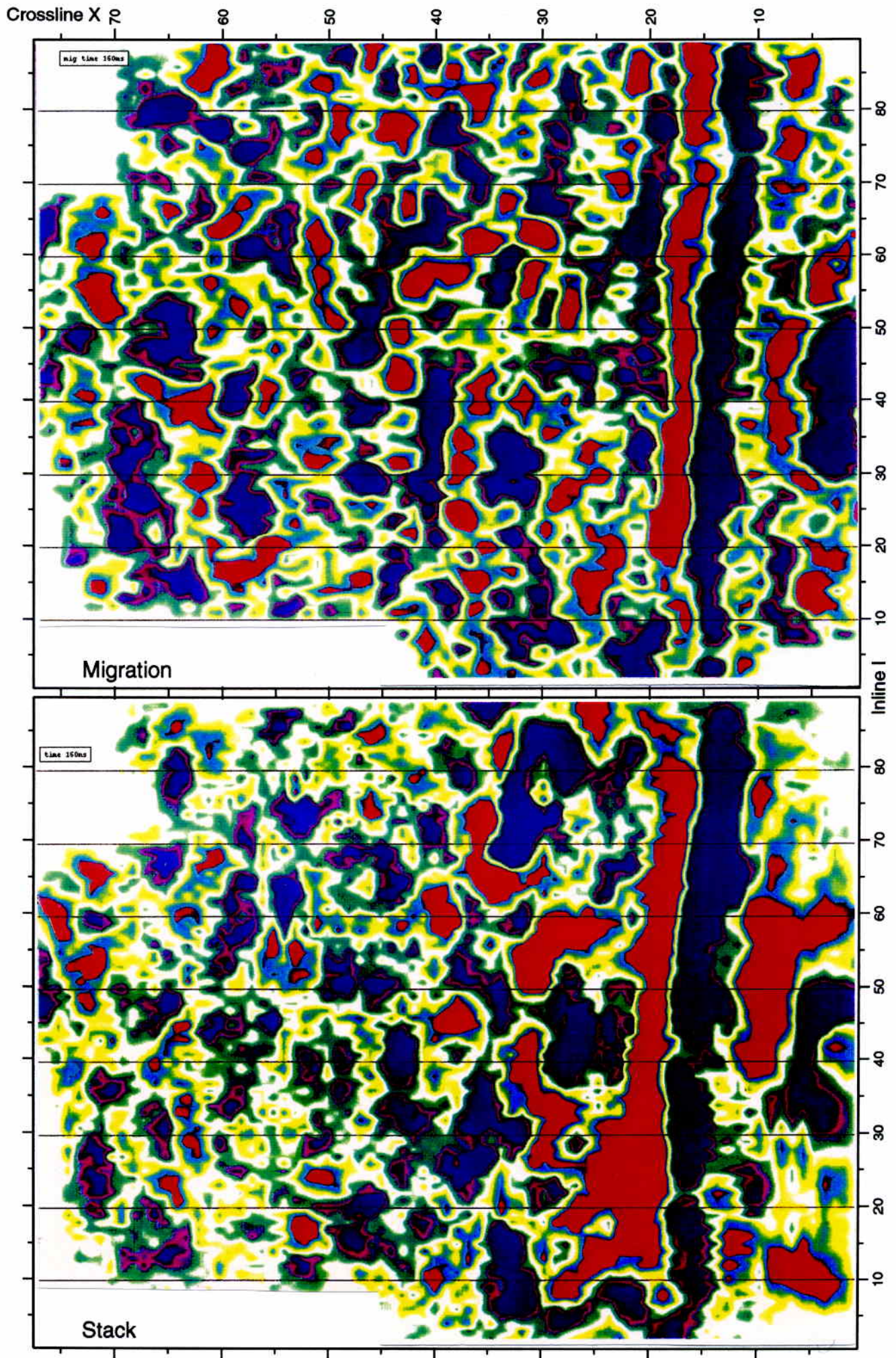




Fig 36. Stacked and migrated time slices at 170 ms.

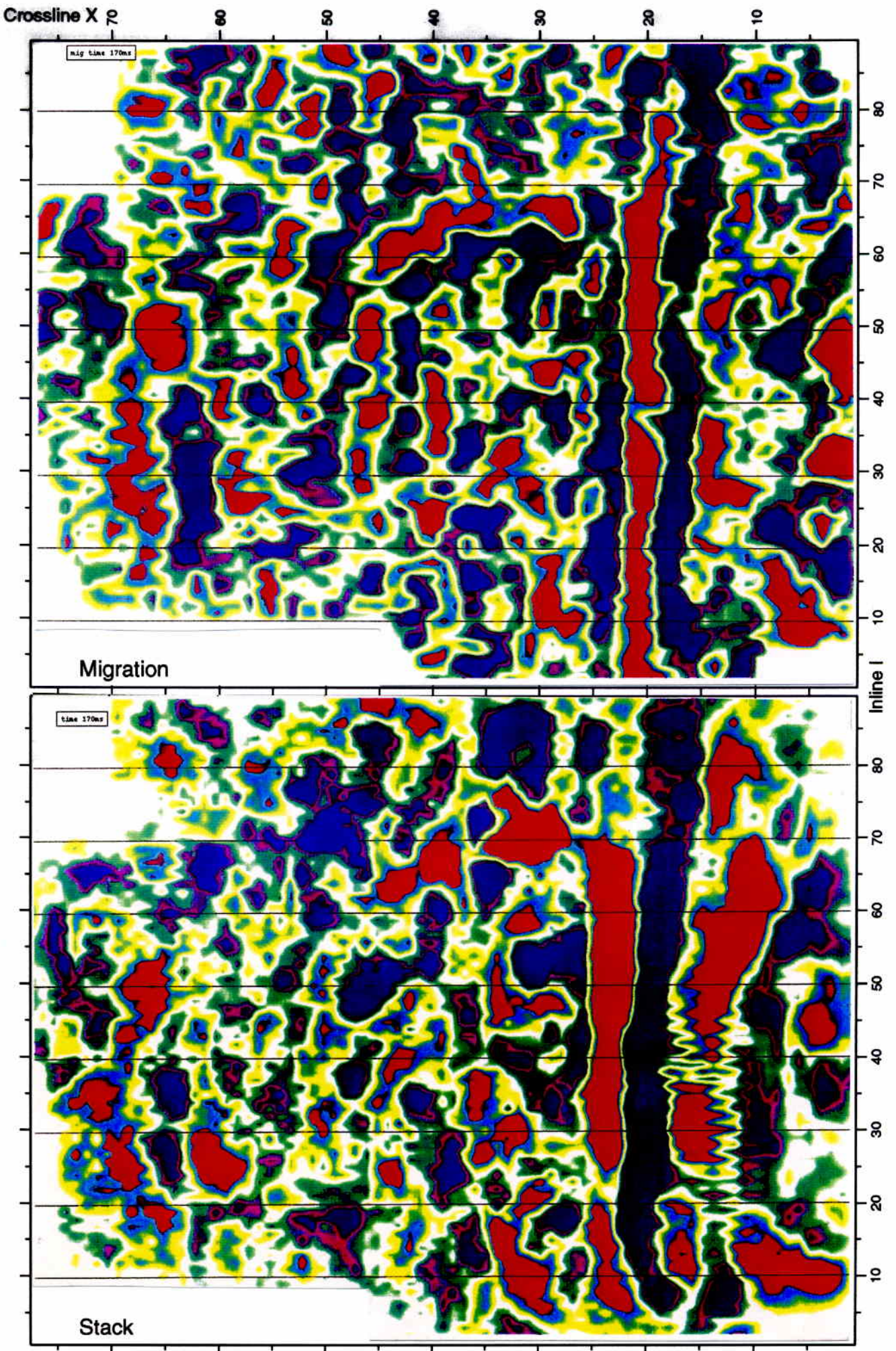




Fig 37. Stacked and migrated time slices at 180 ms.

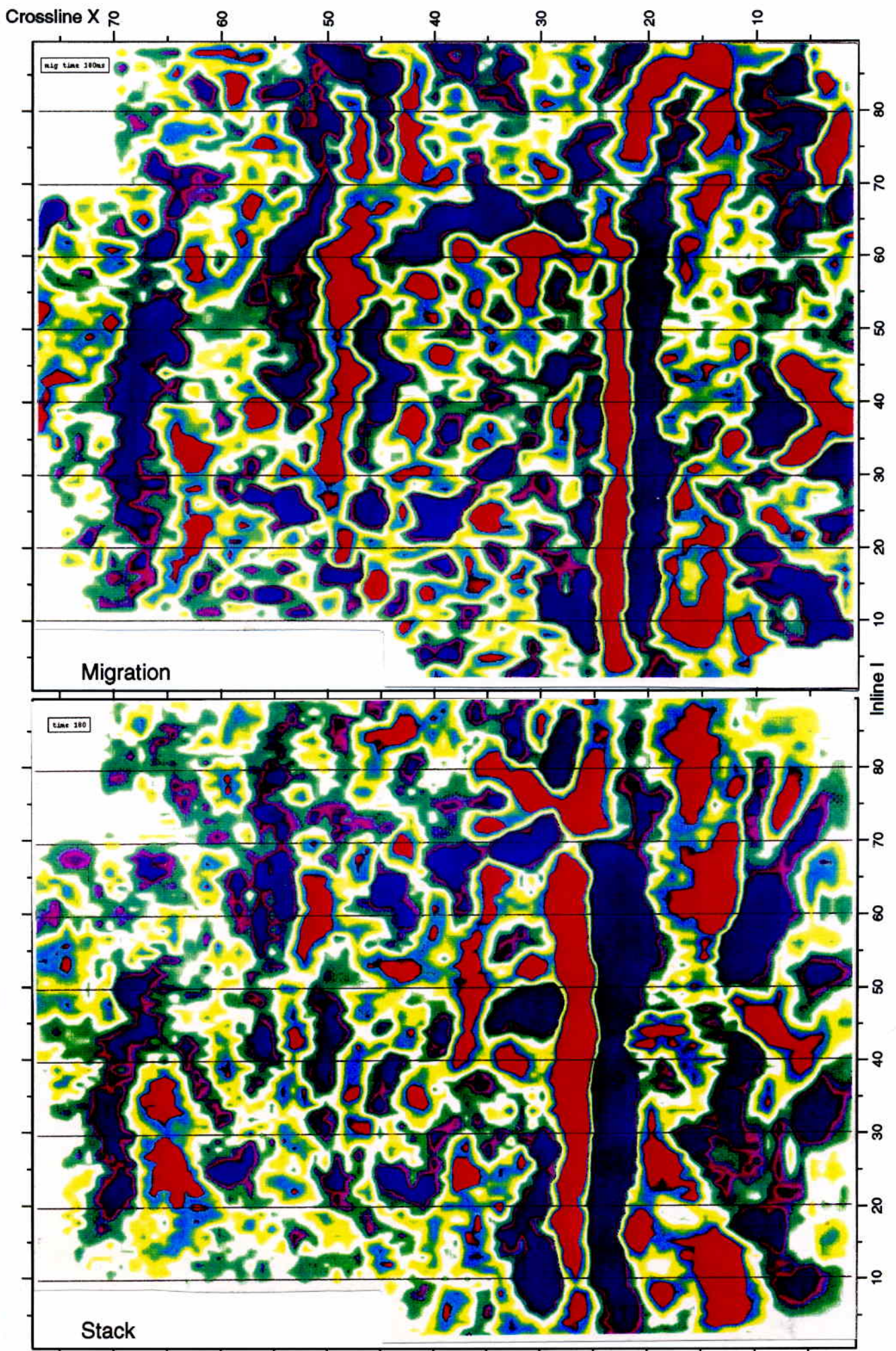




Fig 38. Stacked and migrated time slices at 190 ms.

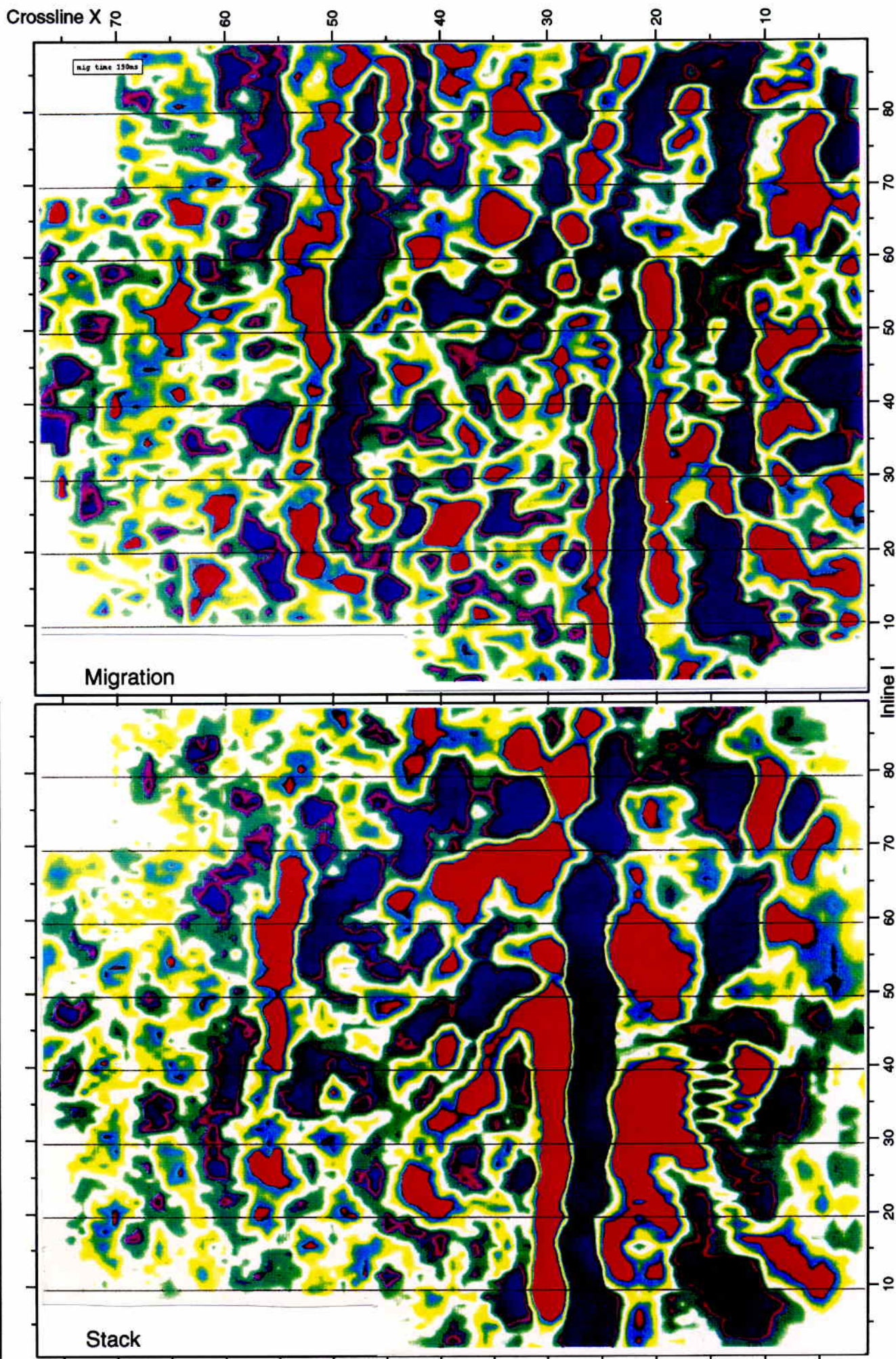




Fig 39. Stacked and migrated time slices at 200 ms.

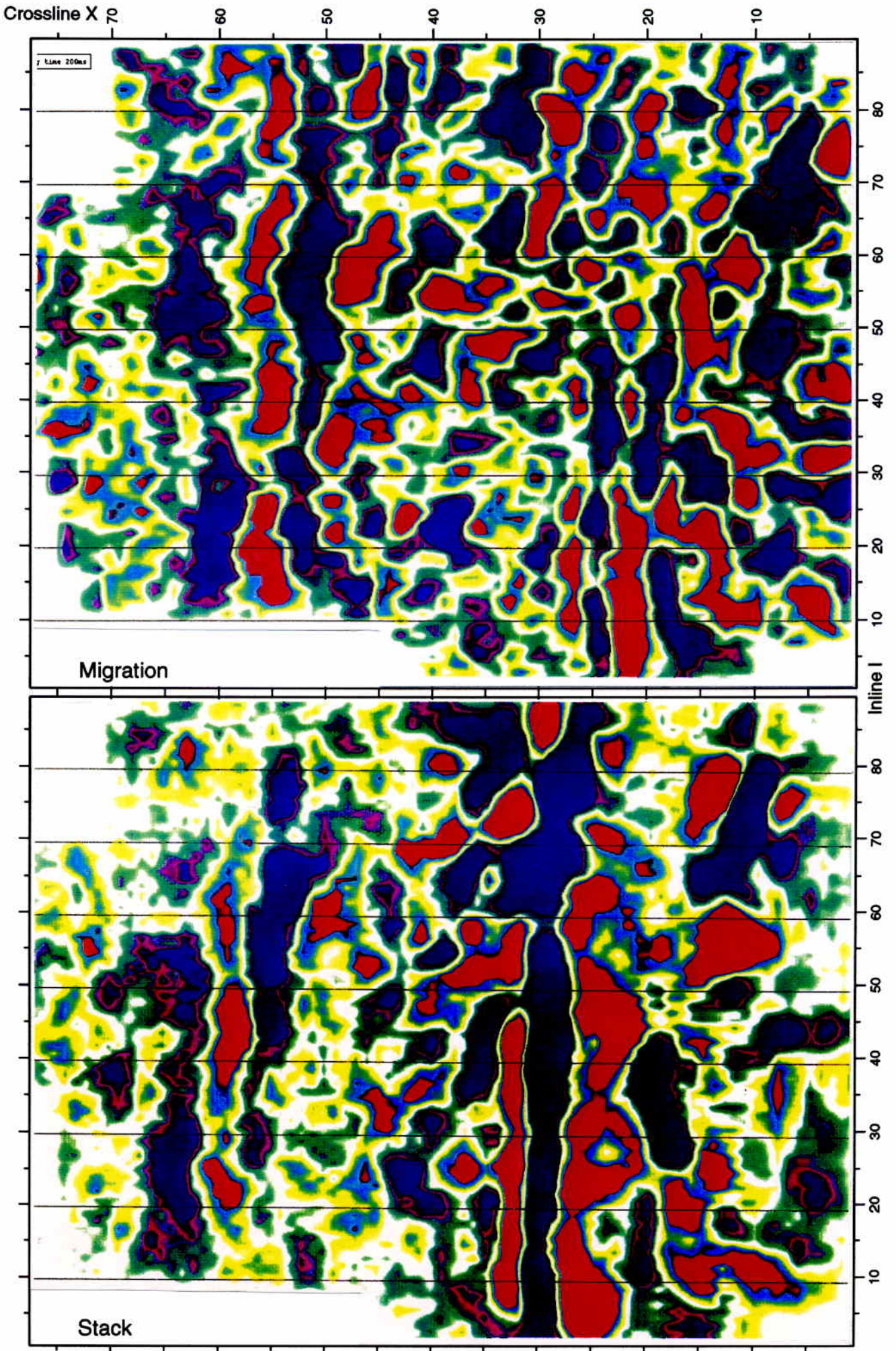




Fig 40. Stacked and migrated time slices at 210 ms.

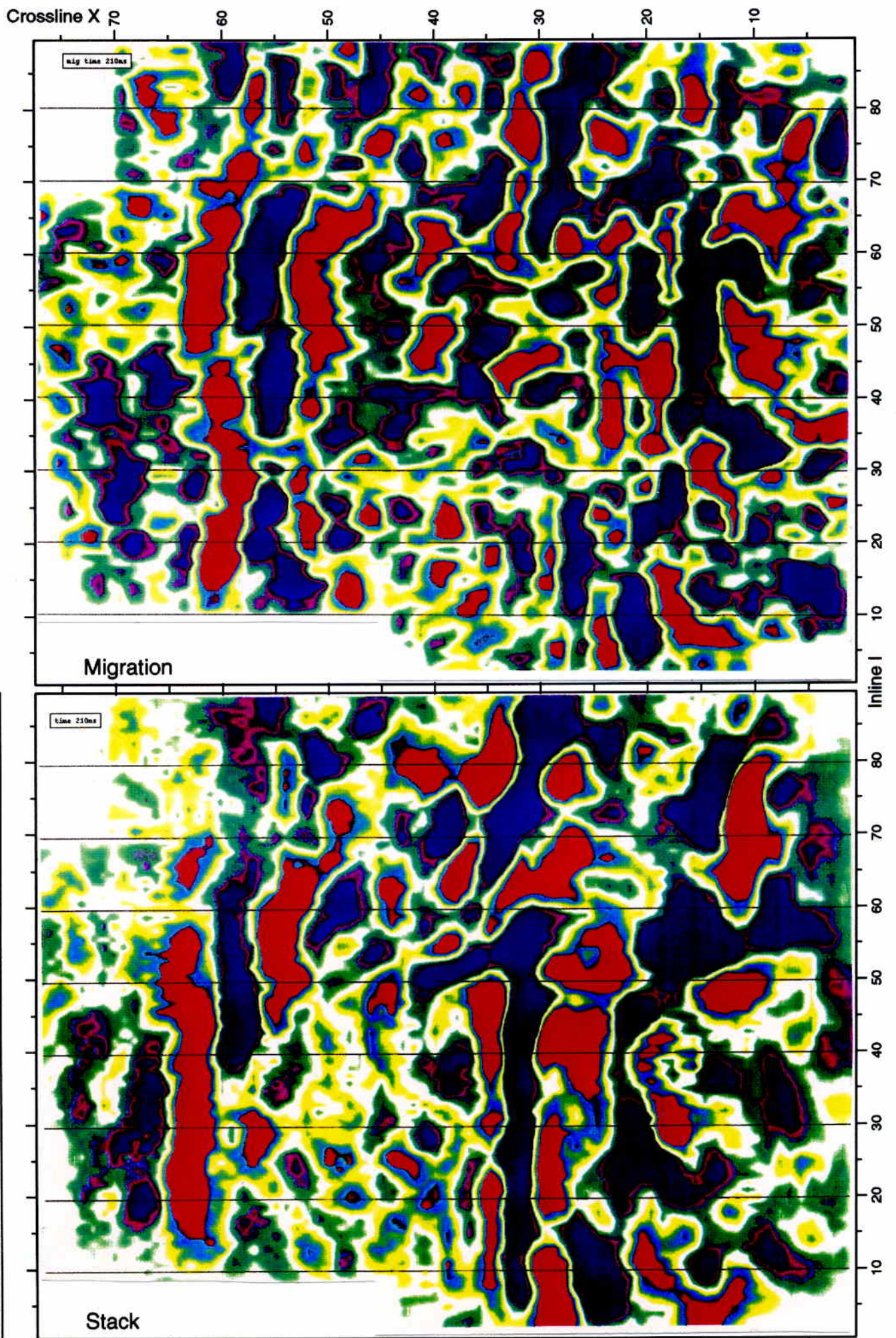




Fig 41. Stacked and migrated time slices at 220 ms.

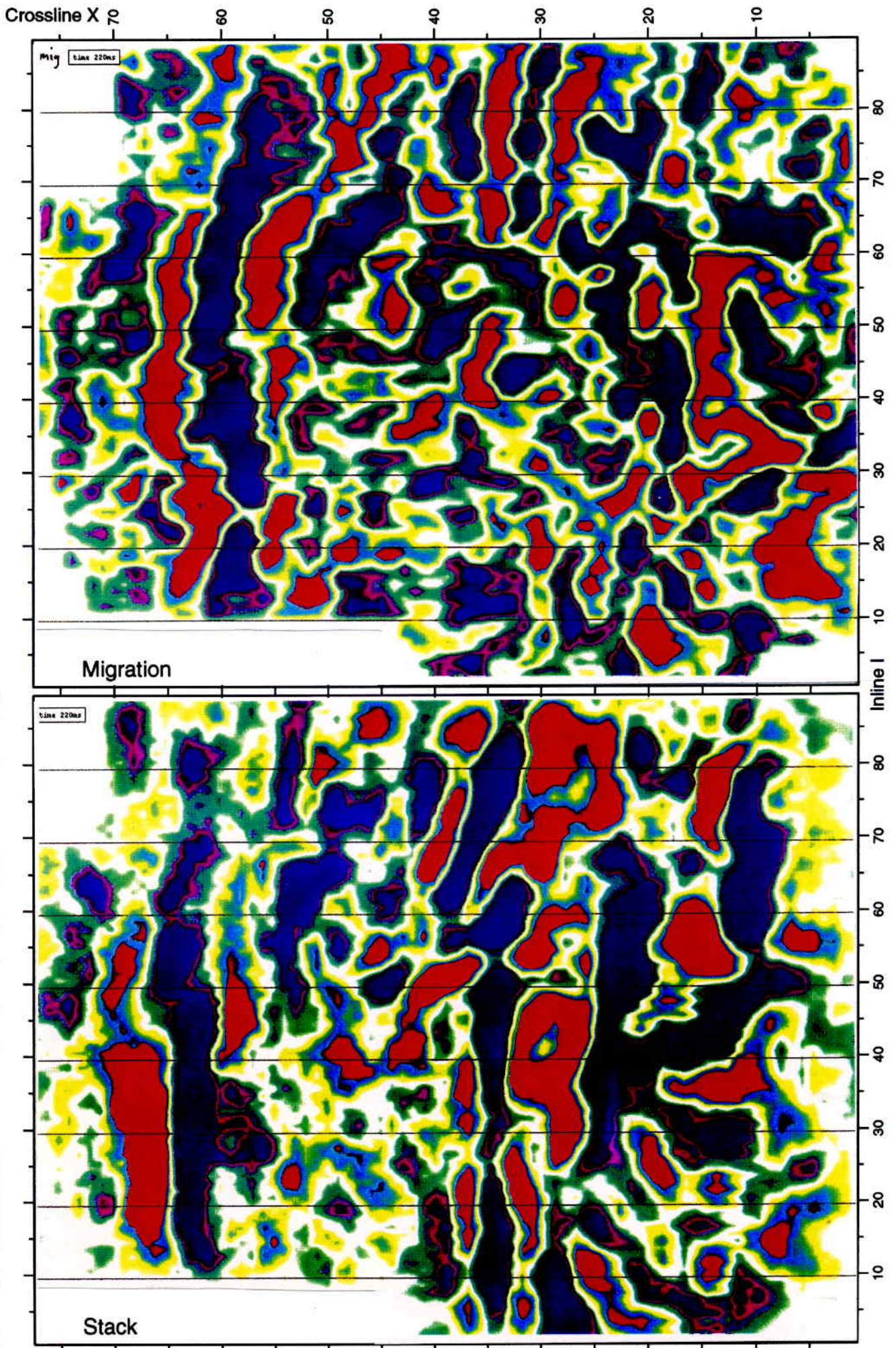




Fig 42. Stacked and migrated time slices at 240 ms.

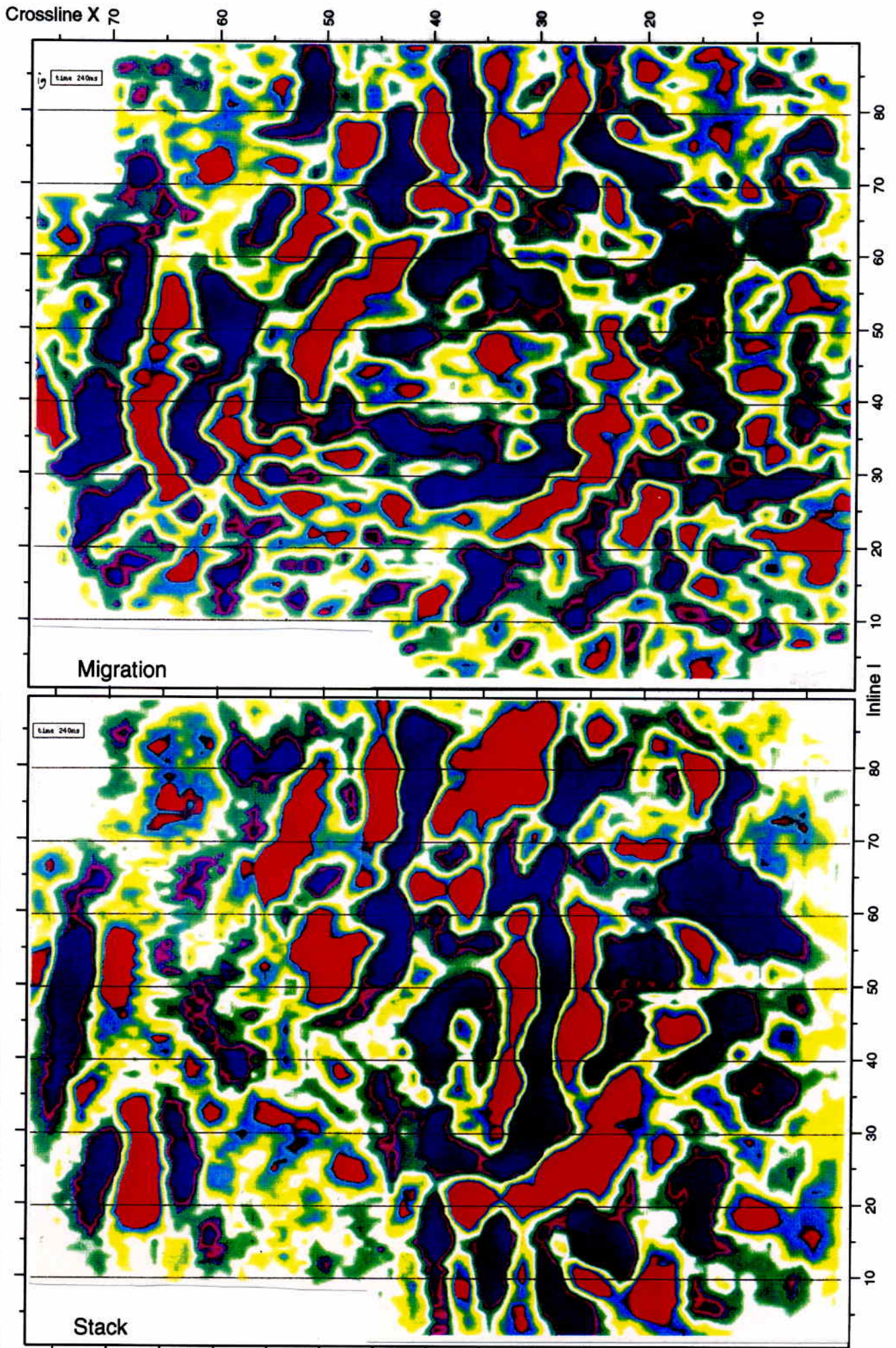




Fig 43. Stacked and migrated time slices at 260 ms.

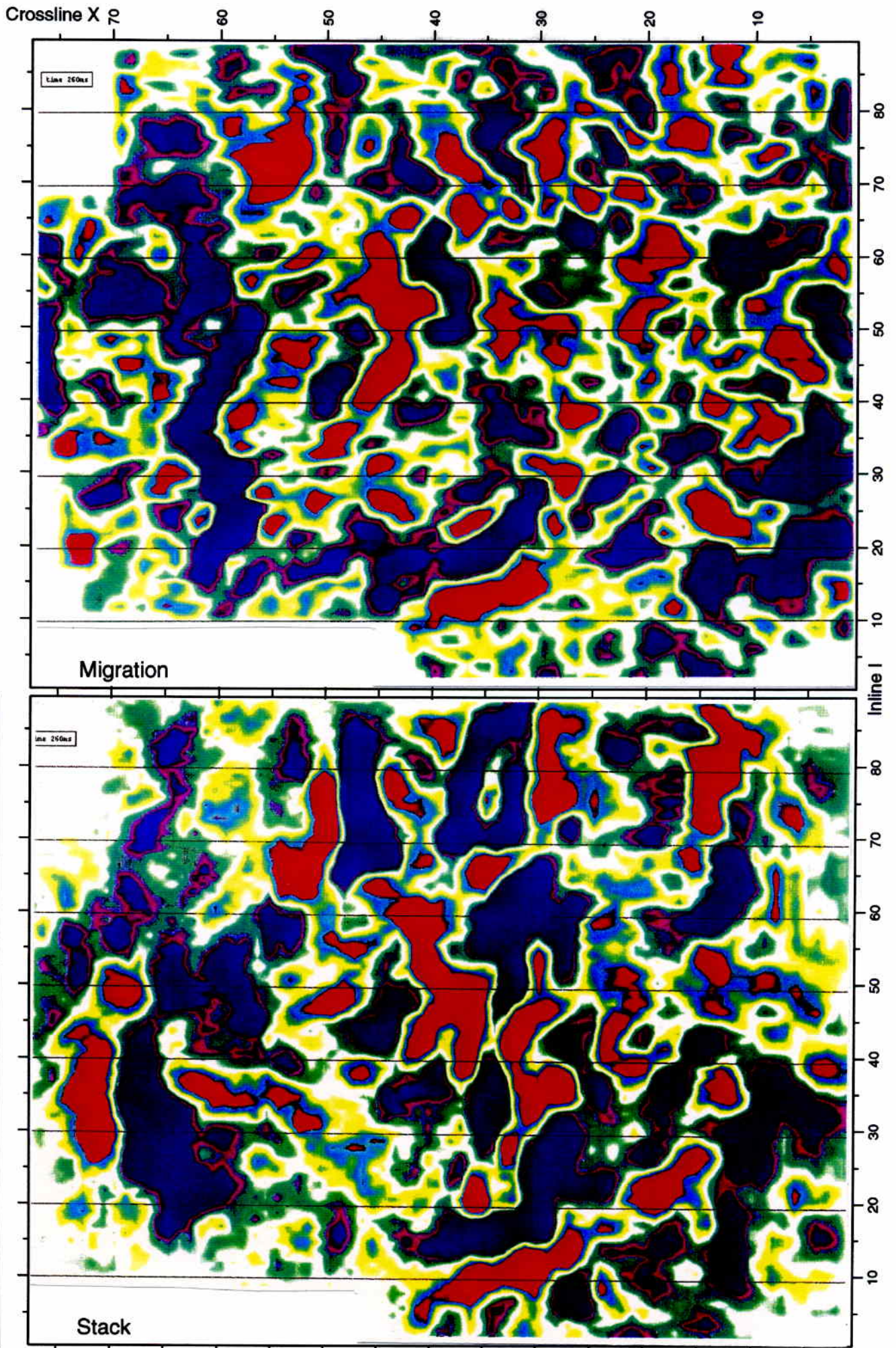




Fig 44. Stacked and migrated time slices at 280 ms.

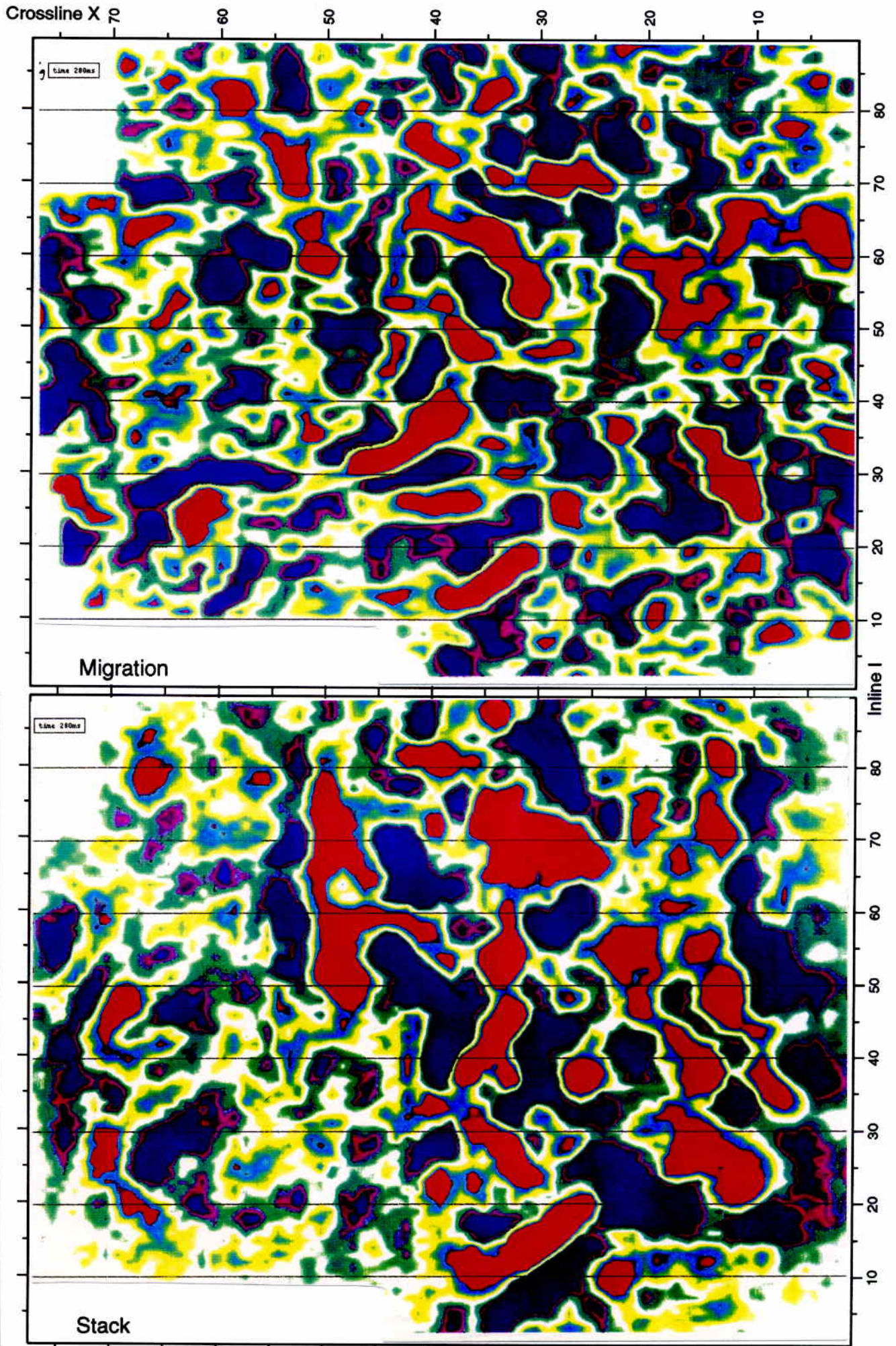




Fig 45. Stacked and migrated time slices at 300 ms.

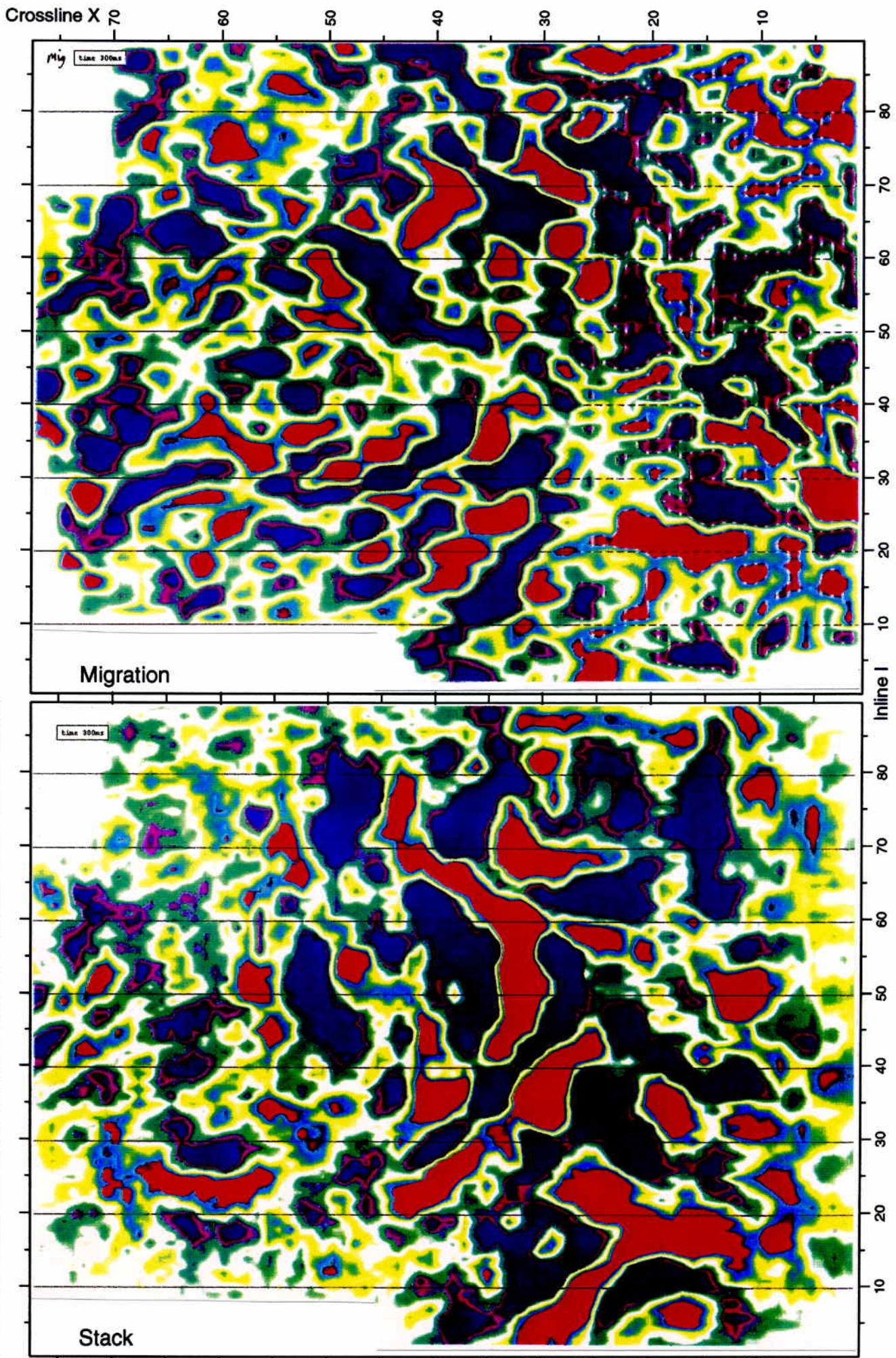




Fig 46. Stacked and migrated time slices at 320 ms.

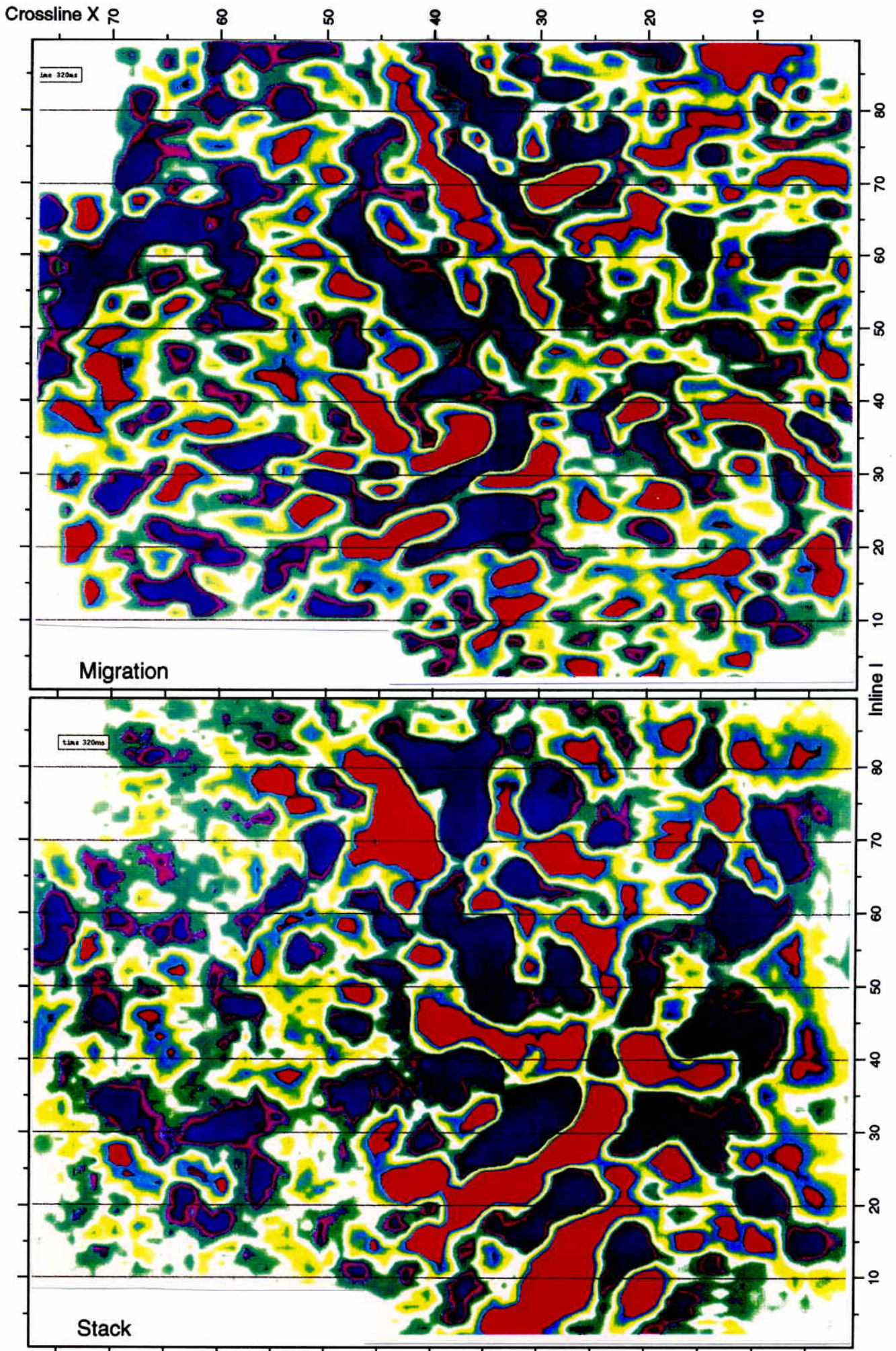




Fig 47. Stacked and migrated time slices at 340 ms.

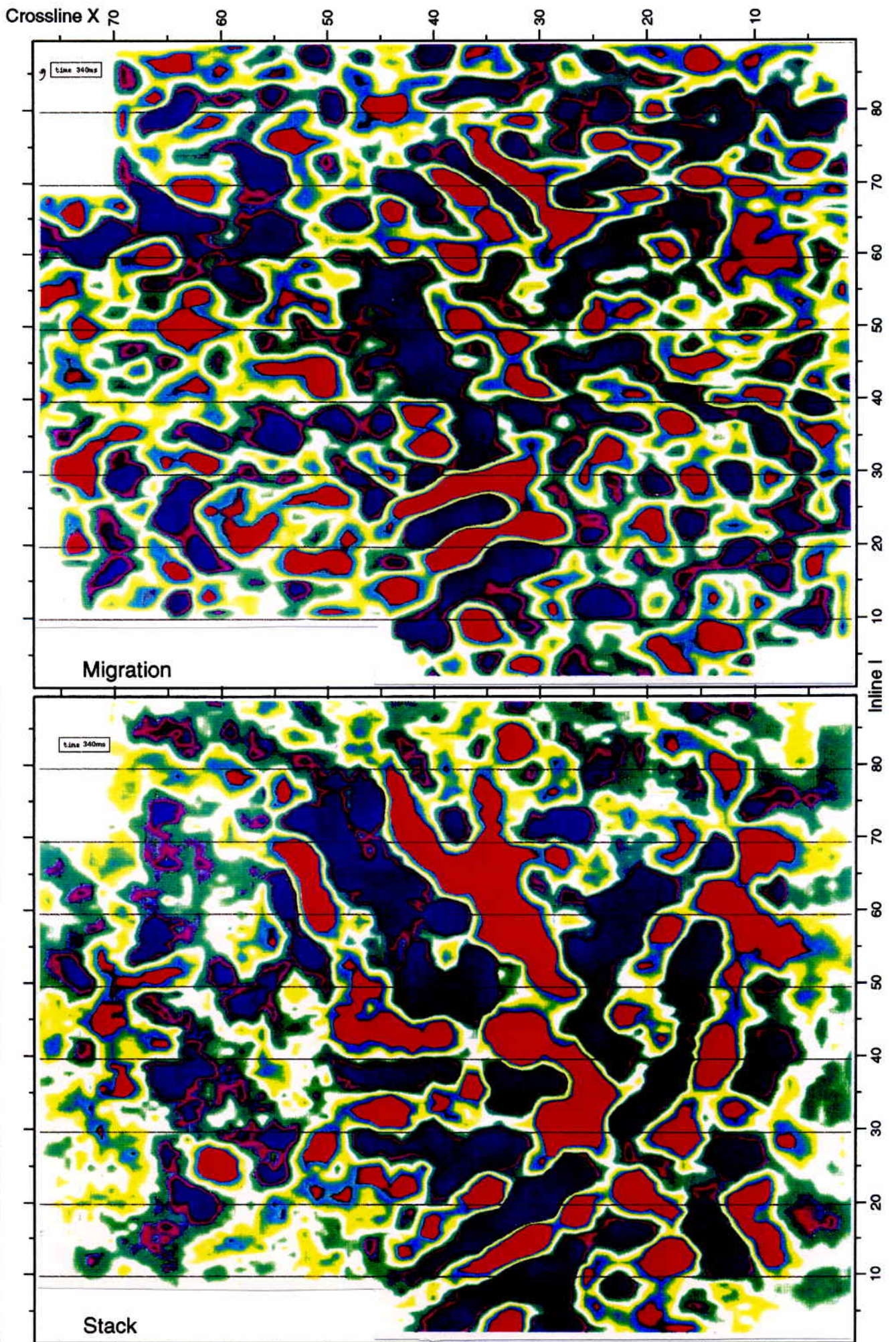




Fig 48. Stacked and migrated time slices at 360 ms.

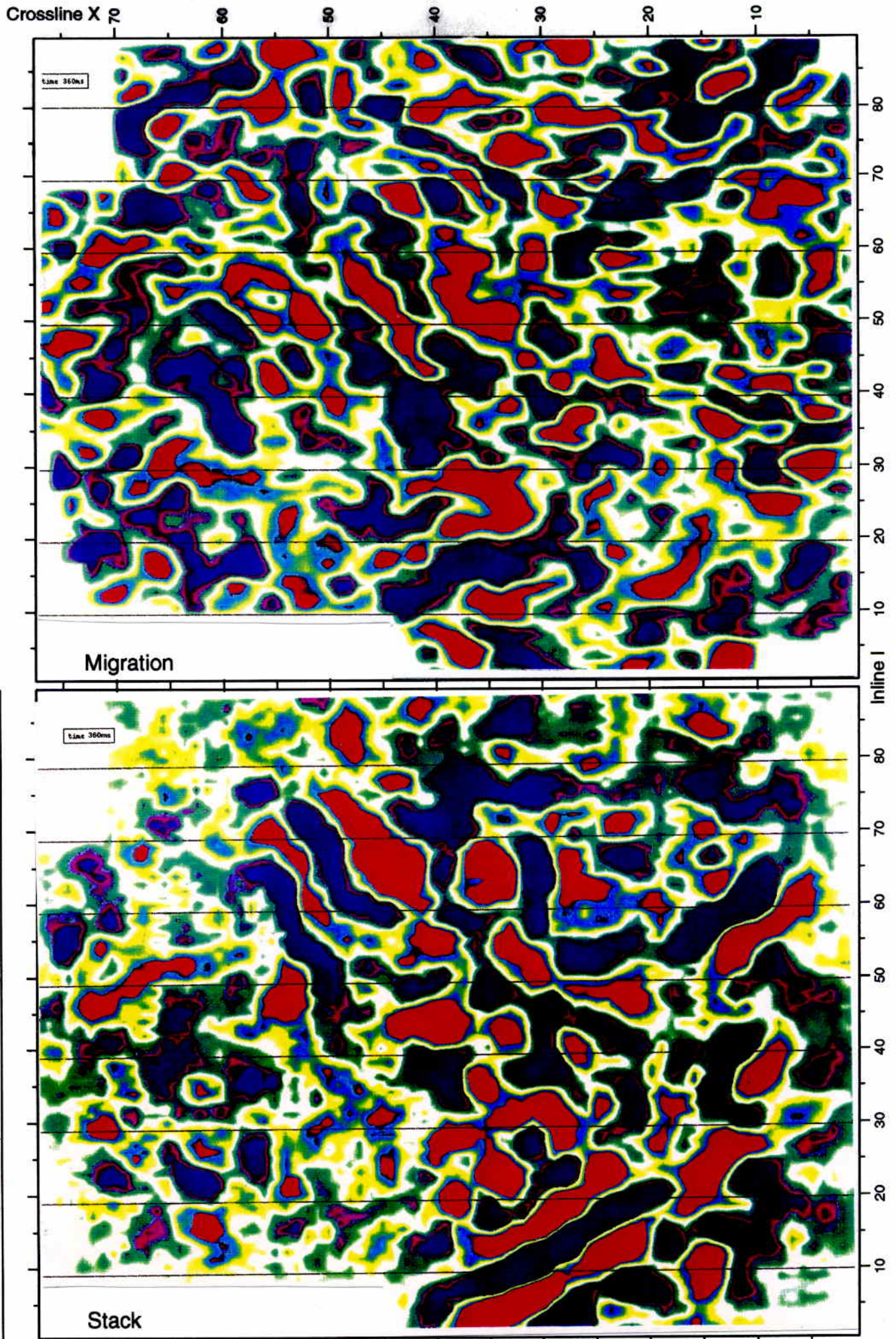




Fig 49. Stacked and migrated time slices at 380 ms.

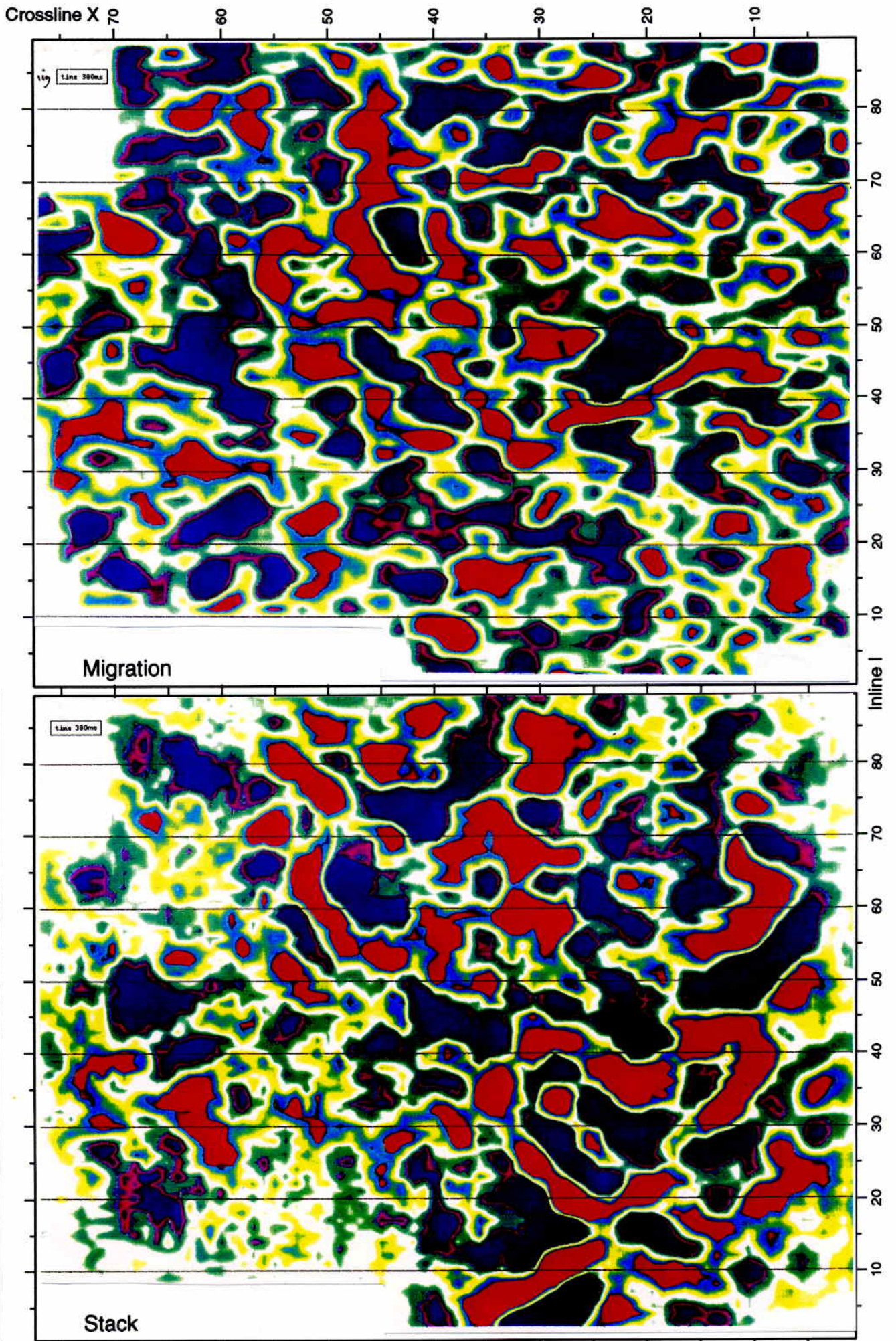




Fig 50. Stacked and migrated time slices at 400 ms.

